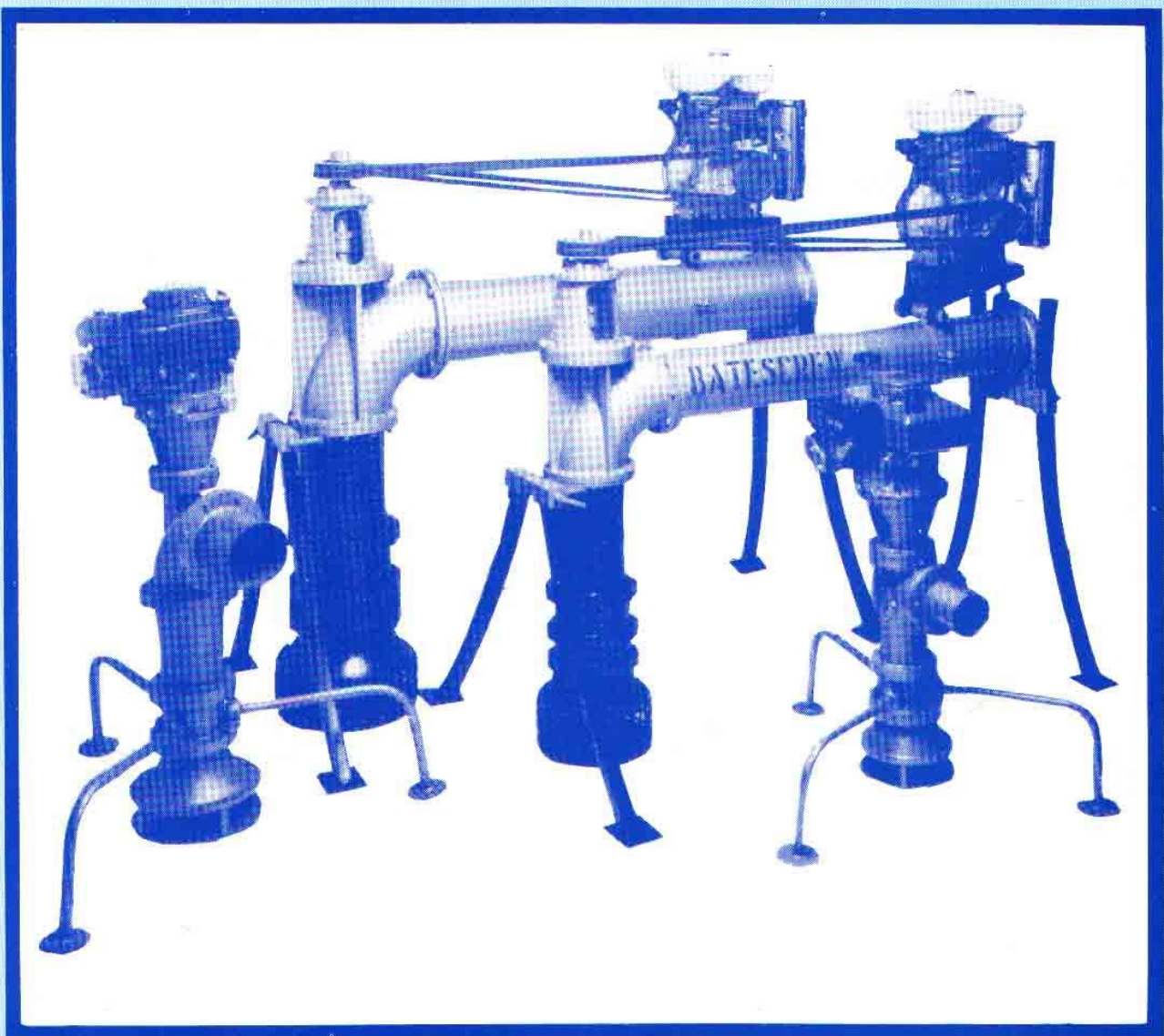
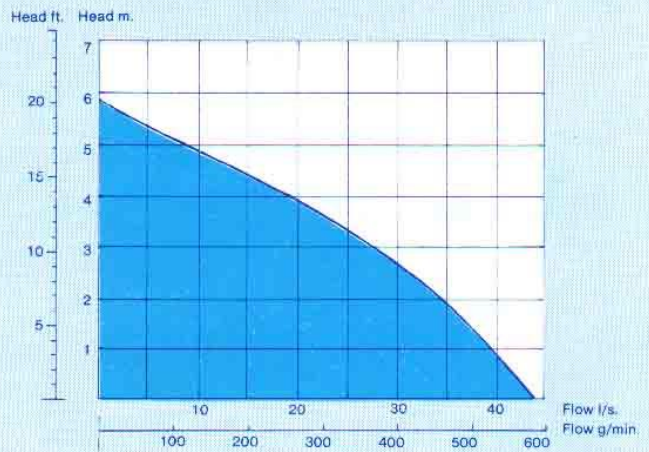
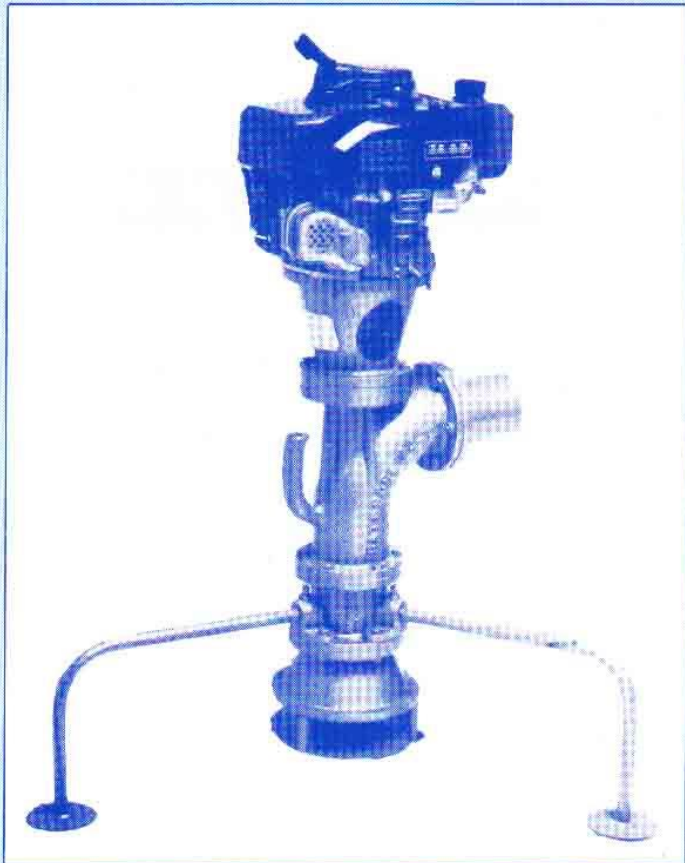


Batescrew

“Portax Range”

PORTABLE FREESTANDING
AXIAL FLOW PUMPS

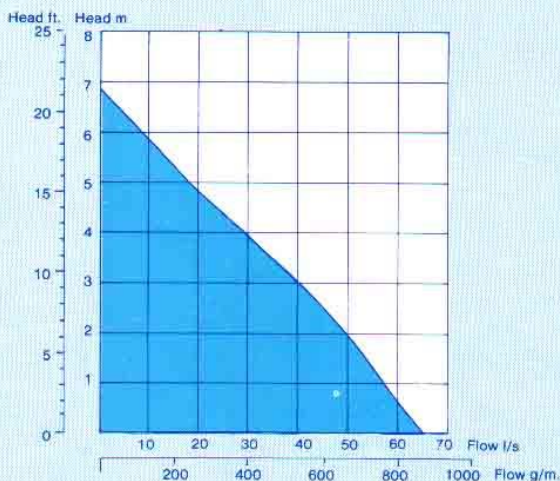




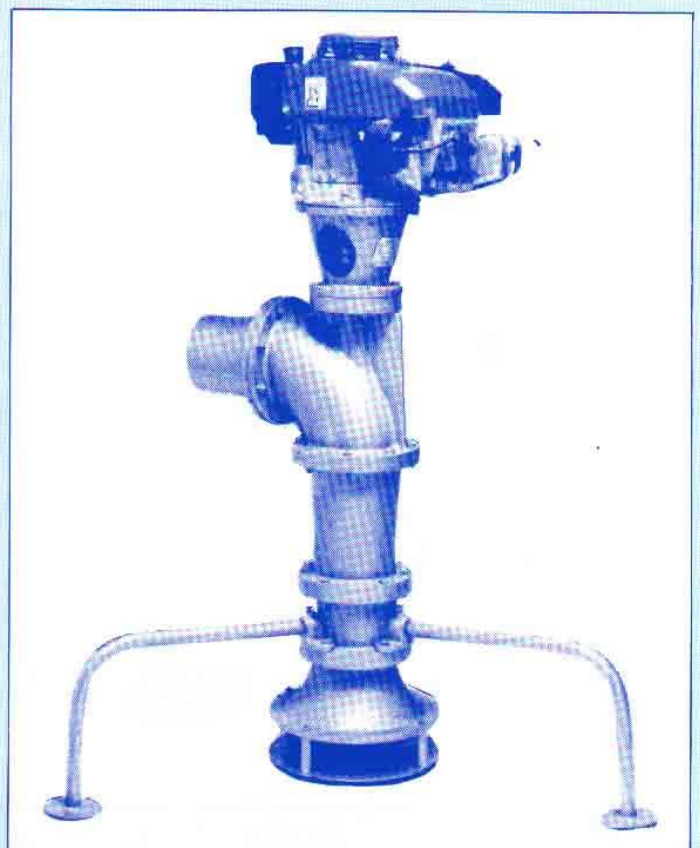
Compact and robust the PORTAX 105 is designed to suit any low lift application where portability is required. The whole unit weighs 37 Kg and has an approximate fuel consumption of 0.4 litres/hour using a 2.6 kw (3.5 H.P.) Honda 4 stroke motor. Lightness and fuel efficiency, coupled with modern pumping technology make the PORTAX 105 the best in its class.

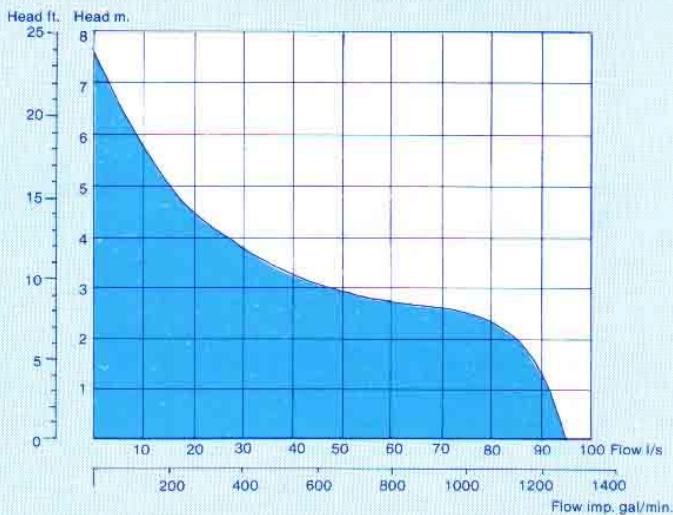
Batescrew P

LUBRICATED SHAFT — NO PRIMING NECESSARY — CAPABLE

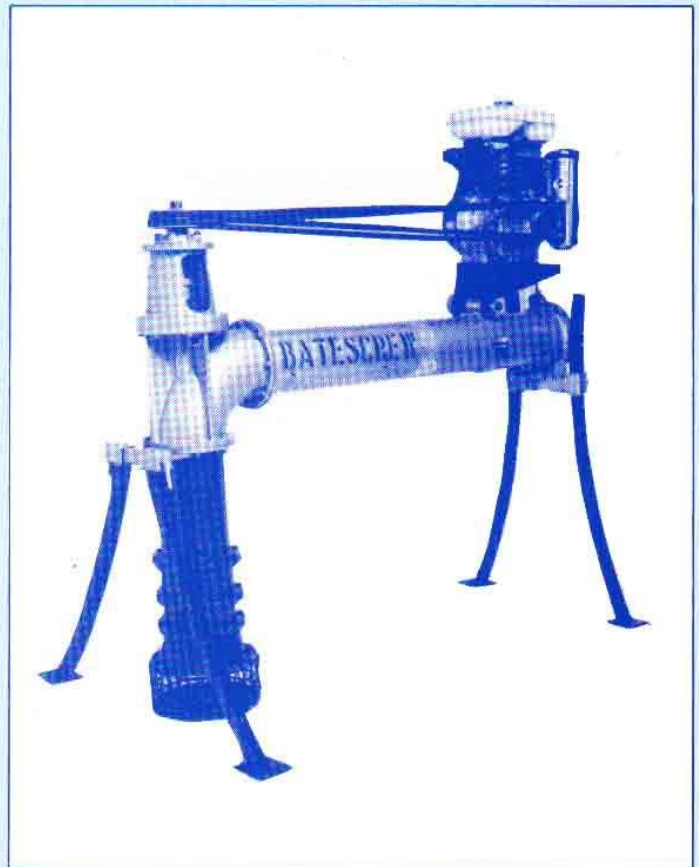


The PORTAX 150 weighs only 75 Kg, has a pumping capacity of 67 l/s (890 g/m) and has been designed to produce the maximum flow rate possible while still remaining light enough for one man to transport. Driven by a 5.6 kw (7.5 H.P.) Honda 4 stroke motor the PORTAX 150 pump is a highly efficient and economical pump using only 0.85 litres of fuel per hour.



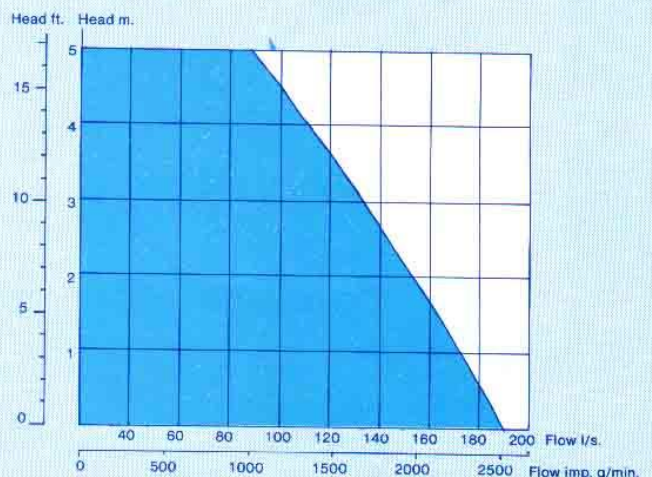
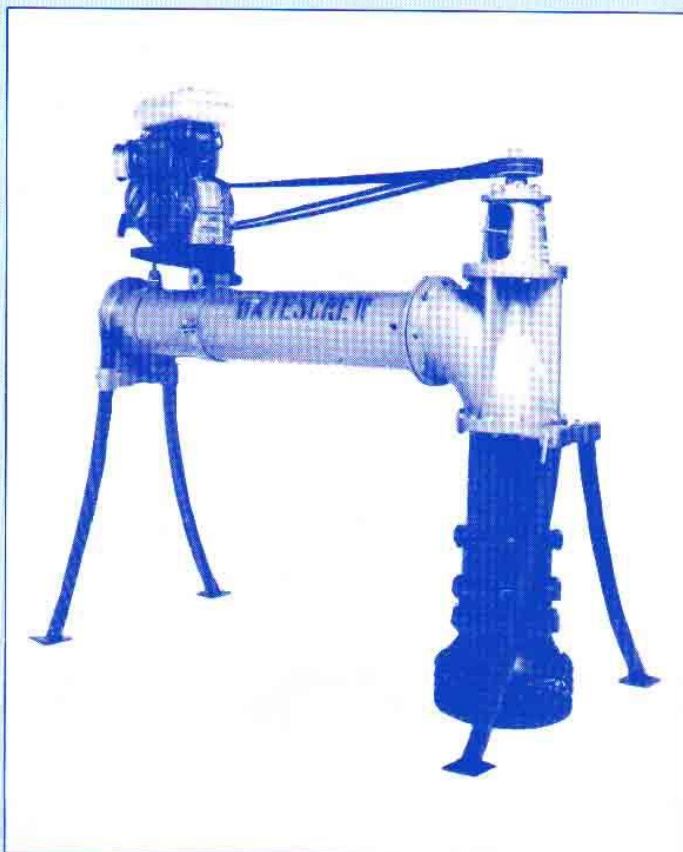


The PORTAX 180 freestanding axial flow pump allows large amounts of water to be pumped without expensive pump site preparation. The PORTAX 180 represents a new generation of freestanding pumps. With its 90 l/s (1200 g/m) capacity using a 8.2 kw (10 H.P.), 4 stroke motor, the pump has more capacity than most stationary pumps. Weight 190 Kgs. The motor is on a pivot mount which allows perfect belt tensions without any adjustment and also allows quick dismantling for transport.



Portax Range

OF PUMPING LARGE QUANTITIES OF TRASH WITHOUT CLOGGING



The PORTAX 230, being the largest of the PORTAX range, has a massive flow rate of 185 l/s (2500 g/m), with V-belt drive from a 8.2 kw (10 H.P.) Honda 4 stroke motor. The whole pump can be transported easily by four men and placed in the most remote and inaccessible sites. Cast aluminium and hot dipped galvanized steel construction throughout make the PORTAX 230 completely corrosion proof. Many years of experience have produced the most advanced portable pump available.

The PORTAX range of freestanding portable pumps is the most efficient and convenient way of pumping from a temporary pump site

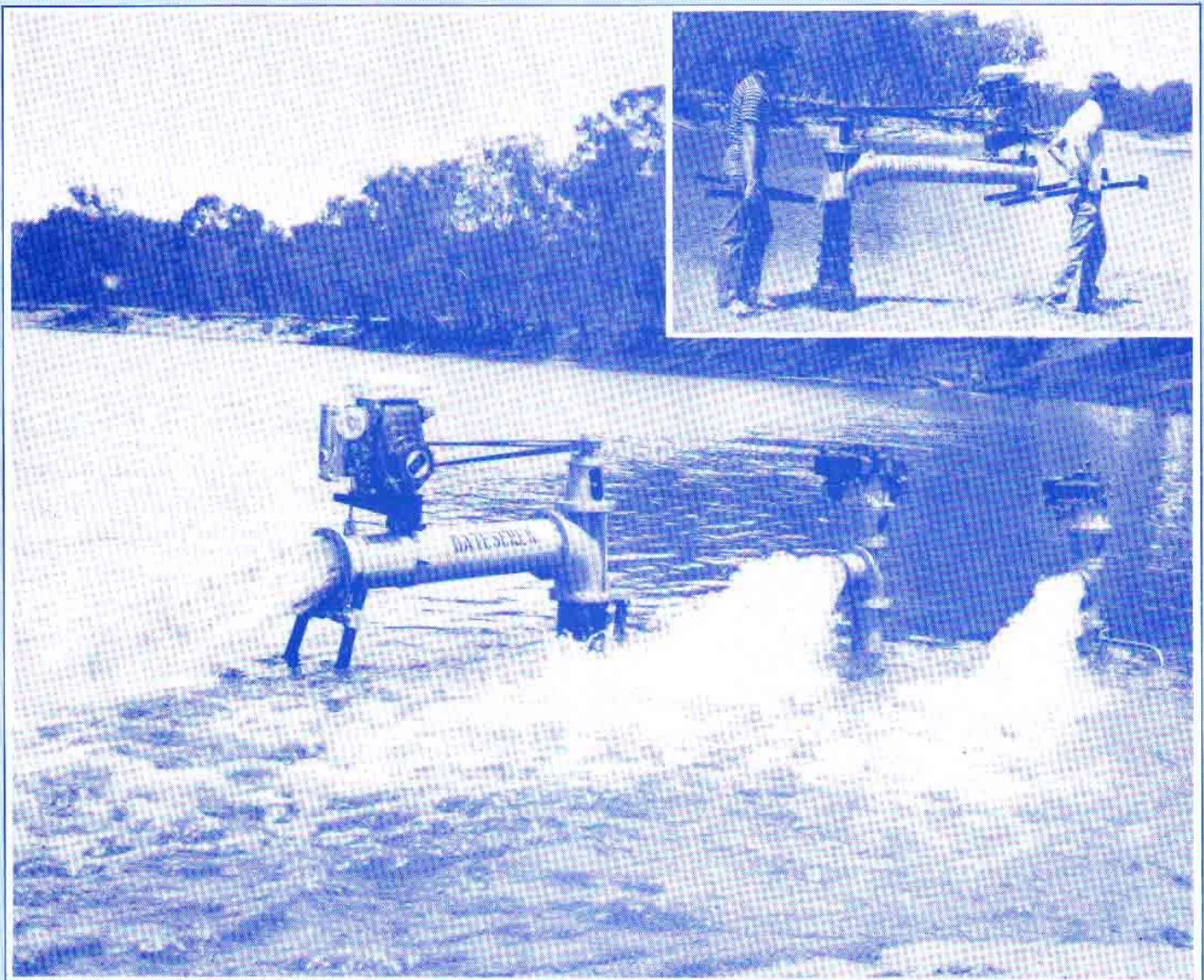
40 years of experience have culminated in the most advanced mobile pump in the world.

OPTIONAL PACKAGES:

- Floating pontoon pump.
- Water lubrication.
- Column extensions.
- Hydraulic motor drive.
- Electric motor drive.

MATERIALS:

- Impeller — Manganese bronze.
- Legs — Structural mild steel.
- Shaft — Stainless steel
- Column — Hot dipped galvanized structural mild steel.
- Discharge Head — Cast aluminium.
- Discharge Pipe — Hot dipped galvanized structural mild steel.
- Bronze oil lube bushes. (if required) as an option.
- Enclosed self aligning top thrust bearing.



Batescrew

MANUFACTURED BY:
**Bate Engineering
& Constructions Pty. Ltd.,**
NEWELL HIGHWAY, TOCUMWAL, N.S.W.
TEL: [058] 74 2101 [058] 74 2501
A.H. 74 2188 & 74 2365
FAX: [058] 74 2084

DISTRIBUTED BY:

